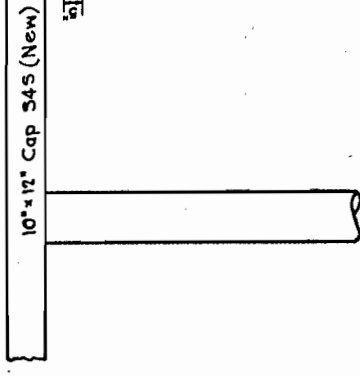


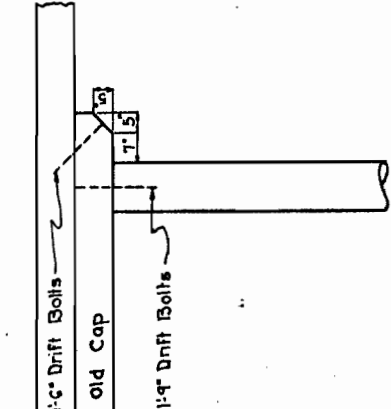
TYPE 'A'

To be used when one Pile can be spliced with Old Cap



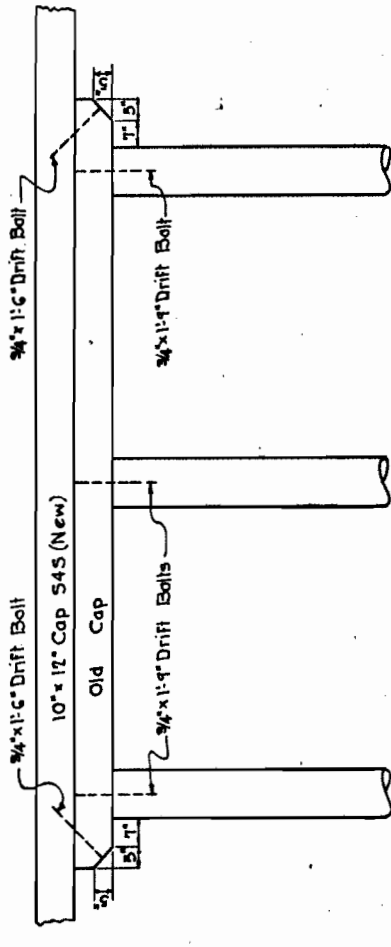
TYPE 'B'

To be used when two Piles can be spliced with Old Cap



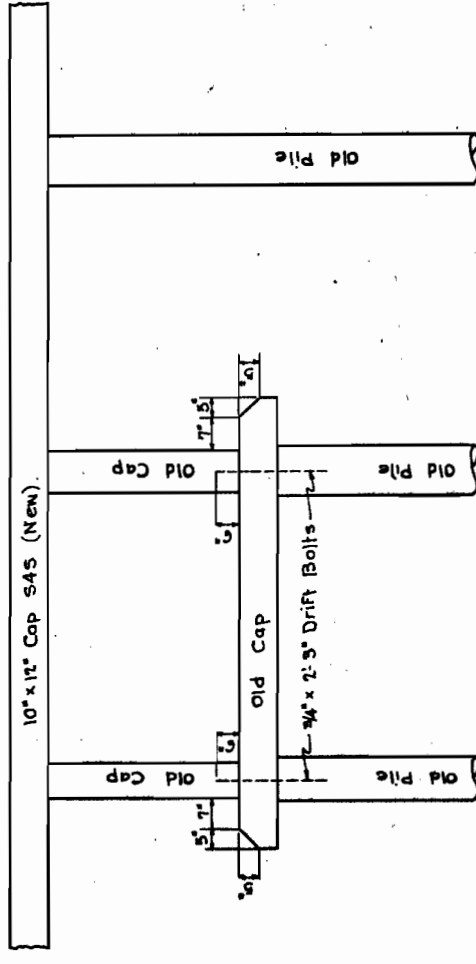
TYPE 'C'

To be used when three Piles can be spliced with Old Cap



TYPE 'D'

To be used for one or two Pile Buildups



TYPE 'E'

To be used for three Pile Buildup

